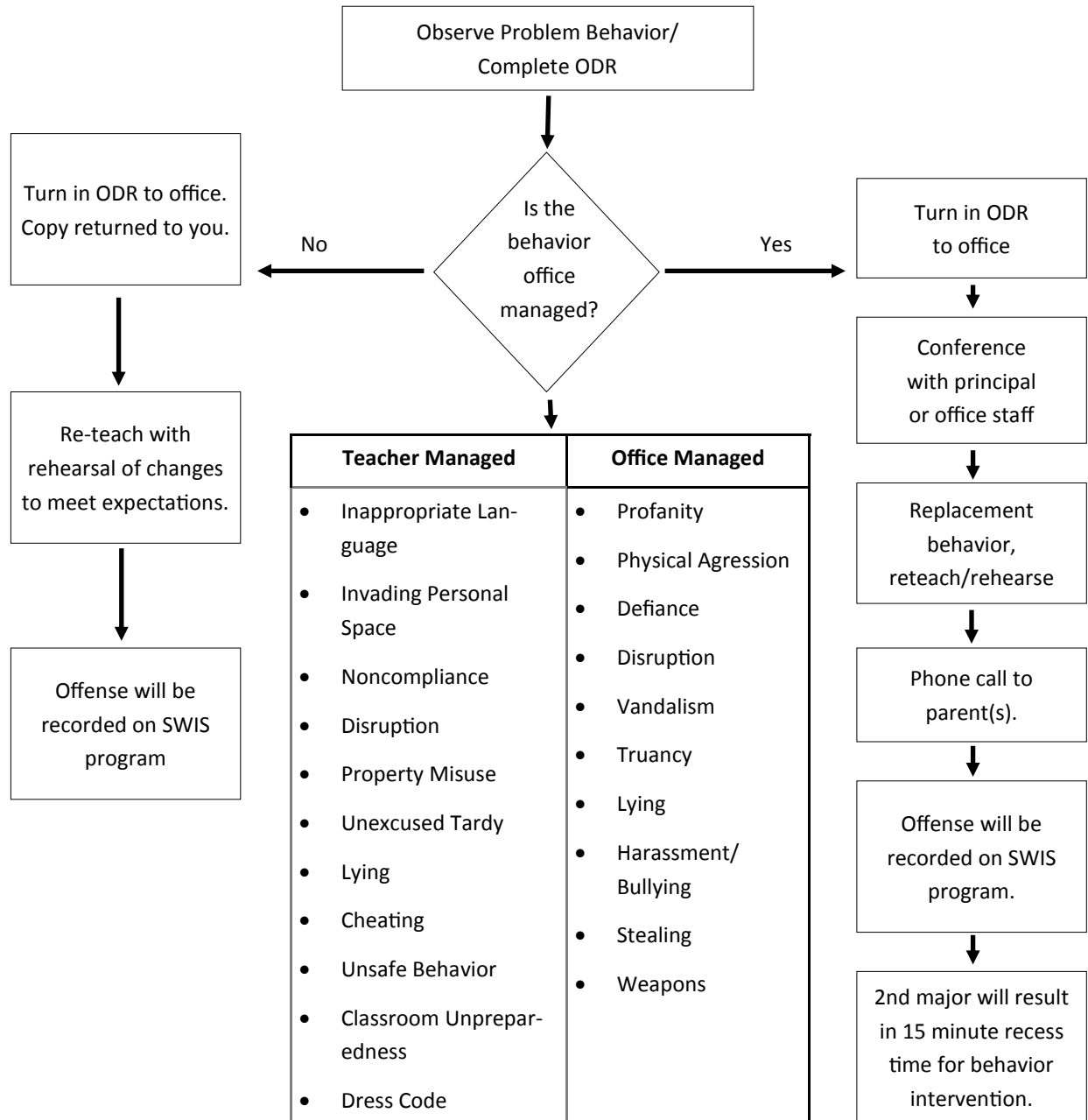


Amherst Elementary School

Student Behavior Management Process



Notes:

- All minor and major offenses should be reported to the student's classroom teacher.
- At any time during the consequence process, it is acceptable to make an office referral at the discretion of the teacher.
- Record a minor referral when student does not respond to pre-correction, redirection, or verbal warning.
- Must contact parent on major referrals.
- When possible, have the corrective action correspond to the behavior corrected (teach and model the appropriate behavior during time with teacher).
- EVERY DAY STARTS A CLEAN SLATE!